

Seattle Transportation Levy Oversight Committee

April 7, 2026



Agenda

- Public Comment
- Committee Business
 - Meeting minutes approval
 - Modal Board report-outs
- 2025 Levy Annual Report Presentation



Public Comment

Committee Business

Meeting Minutes Approval
Modal Board Report-Outs

2025 Seattle Transportation Levy Annual Report

Report Basics

- Provides snapshots and storytelling
- Accompanies [Seattle Transportation Levy Dashboard](#) which has more detail on deliverables and in-progress projects
- Focuses on 2025 completed work
- Illustrates how investments support implementation of the Transportation Equity Framework
- Underway: project map development

2025 Levy Performance Themes

- ✓ Most programs met or exceed 2025 Seattle Transportation Levy Delivery Plan planned milestones
- ✓ On track to fulfill life-of-Levy commitments for all programs

- Some programs face delays
 - Challenges include material procurement, funding constraints, agency and partner coordination
- Certain programs have higher delivery timeline and budget risks
 - Similar to past levies, challenges include scope changes, cost increases, utility conflicts, and railroad coordination

Key Program Performance Milestones

- ✓ **Better Bike Barriers:** On track to meet Levy commitment by 2027
- ✓ **Sidewalk Safety Repair:** Completed 20,934 spot improvements of the 34,000 life-of-Levy target
- ✓ **New Sidewalks:** Identified all 250 accelerated sidewalk blocks through community walks; constructed 29 blocks



Key Program Performance Milestones continued

- ✓ **Safe Routes to School:** Delivered 30 projects, with a goal of 70 over the life of the Levy
- ✓ **Potholes:** Exceeded repair goals, completing over 17,276 pothole repairs
- ✓ **Transit:** All four transit corridors in legislation are in the design phase



Centering Equity in Levy Delivery

Our work is guided by **SDOT's Transportation Equity Framework (TEF)**. In 2025, we:

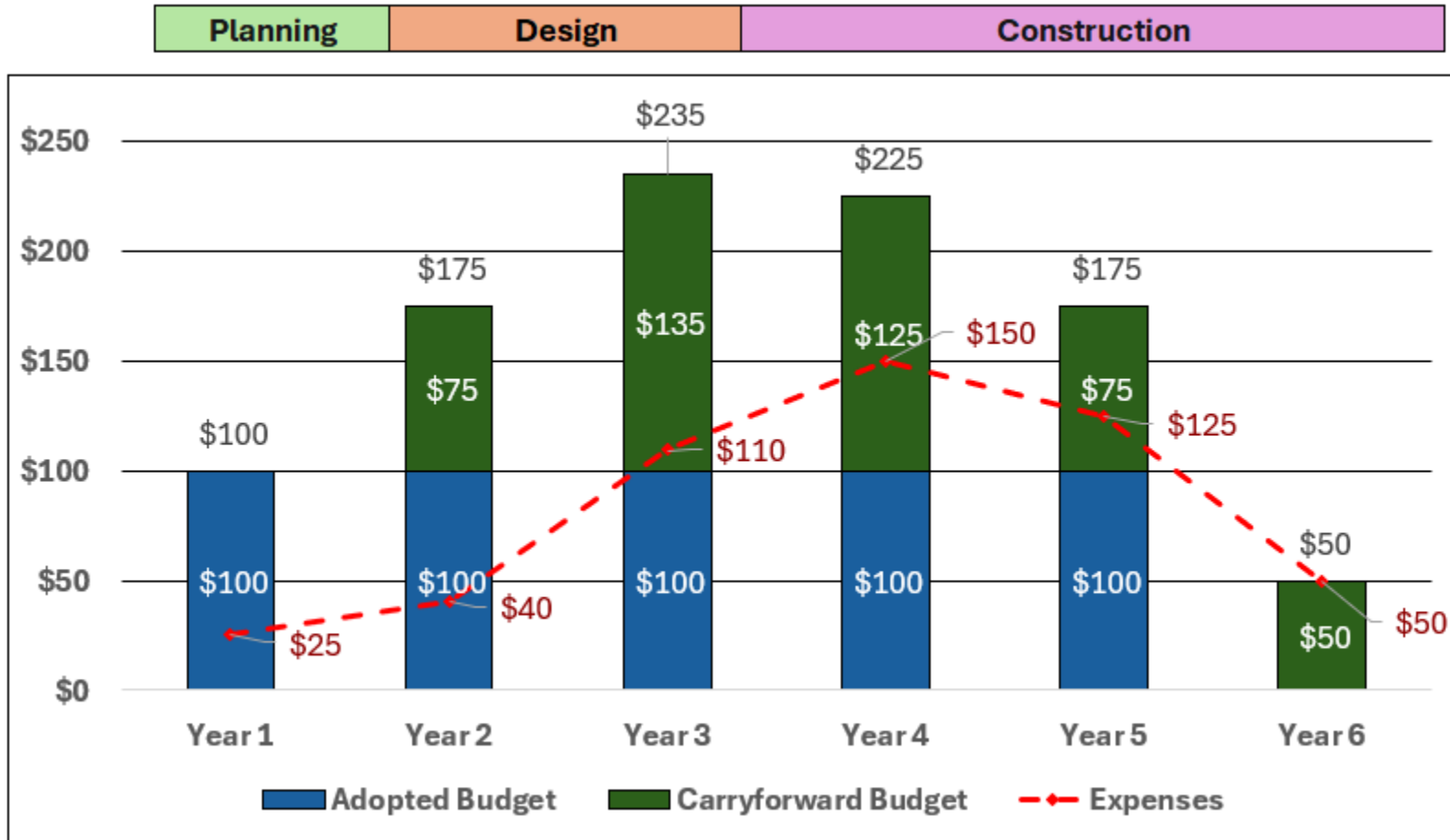
- **Led intentional community engagement**
- **Emphasized pedestrian safety** in street designs
- Supported **access to transit** for those who rely on it most
- **Hosted 10 neighborhood walkshops** to co-create sidewalk and walkway plans
- Hosted **5 small business outreach events** to share contracting opportunities
- **Focused maintenance and safety resources** in historically underinvested neighborhoods
- **Co-created projects with community** to address local needs
- **Installed public art projects** celebrating Seattle's cultural diversity and history

CATEGORY	2025 Spending	2025 Budget	Life of Levy Allocation
Vision Zero, School, and Neighborhood Safety	\$10.9M	\$16.3M	\$160.5M
Street Maintenance & Modernization	\$11.6M	\$43.0M	\$403M
Bridges & Structures	\$6.6M	\$19.0M	\$221M
Transit Corridors & Connections	\$4.3M	\$12.6M	\$151M
Pedestrian Safety	\$19.1M	\$29.3M	\$189.4M
Signals & Operations	\$9.3M	\$11.6M	\$100M
Bicycle Safety	\$8.5M	\$17.3M	\$133.5M
People Streets & Public Spaces	\$1.4M	\$9.8M	\$66M
Climate & Resiliency	\$3.9M	\$11.0M	\$69M
Freight & Goods Movement	\$1.7M	\$3.7M	\$45M
Good Governance & Equitable Implementation Initiative	\$.0007M	\$2.2M	\$7.5M
District Project Fund	\$.03M	\$2.0M	\$4.1M
Grand Total	\$77.3M	\$177.8M	\$1,550M

When budget is left at the end of the year

Example of relationship between adopted/carryforward budget in a capital project.

Scenario – Program receives \$500 over 5 years (\$100 per year)



Total Annual Budget =
Adopted + Carryforward

In years when expenses are **greater** than adopted budget (3-6 years), carryforward **decreases** the following year.

In year when expenses are **less** than adopted budget (1-2 years), carryforward **increases** the following year.

Highlights By Program Area

VISION ZERO, SCHOOL & NEIGHBORHOOD SAFETY

Make targeted and community-requested improvements to streets, sidewalks, intersections, and crossings to reduce traffic collisions, severe injuries, and fatalities.



14 Neighborhood traffic safety improvements



30 Safe Routes to School Projects



45 Intersections with leading pedestrian intervals



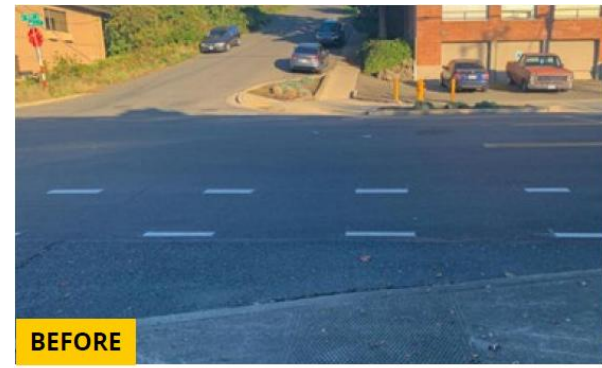
3 Arterial traffic calming projects on 14th Ave S, 62nd/64th Ave S, and Fuhrman Ave E



18 High-collision safety projects: 1st Ave S & Spokane St, Aurora Ave N & N Roy St, Rainier Ave S between S Charlestown St and S Andover St, and more.



Completed the N 130th St Phase 1 Safety Corridor project



BEFORE



AFTER



BEFORE



AFTER

Before and after a project on N Greenwood Ave and N 95th St to make it easier to cross the street and prevent cut-through traffic. This project was developed based on crash data and resident input. This project included new crossings, bike lane markings, a pedestrian crossing median, and more.



STREET MAINTENANCE AND MODERNIZATION

Repave arterial streets that carry the most buses, trucks, and cars, and improve infrastructure for people walking, rolling, biking, and taking transit.



7.6 Lane miles of paving spot improvements across 65 locations



17,276 Potholes filled



90% of pothole work orders filled within 72 hours of request



560 Lane-miles restriped



1501 Crosswalks remarked



Progress on design for paving projects on E Marginal Way S, N 130th St, Pinehurst Way NE, and Roosevelt Way NE



SDOT crews remarking arterials lane-miles



SDOT crews remarking sidewalks on SW Myrtle St and 16th Ave SW.



BEFORE



AFTER

Before and after a repaving project on 16th Ave S. We removed damaged concrete panels and patched with full-depth asphalt.



BRIDGES AND STRUCTURES

Keep bridges and structures in reliable working condition and prepare for future bridge projects.



129 Bridge preventative maintenance projects



Deck Overlay on 15th Ave NW/Leary Way Bridge



Progress on design for 17 bridge preservation projects



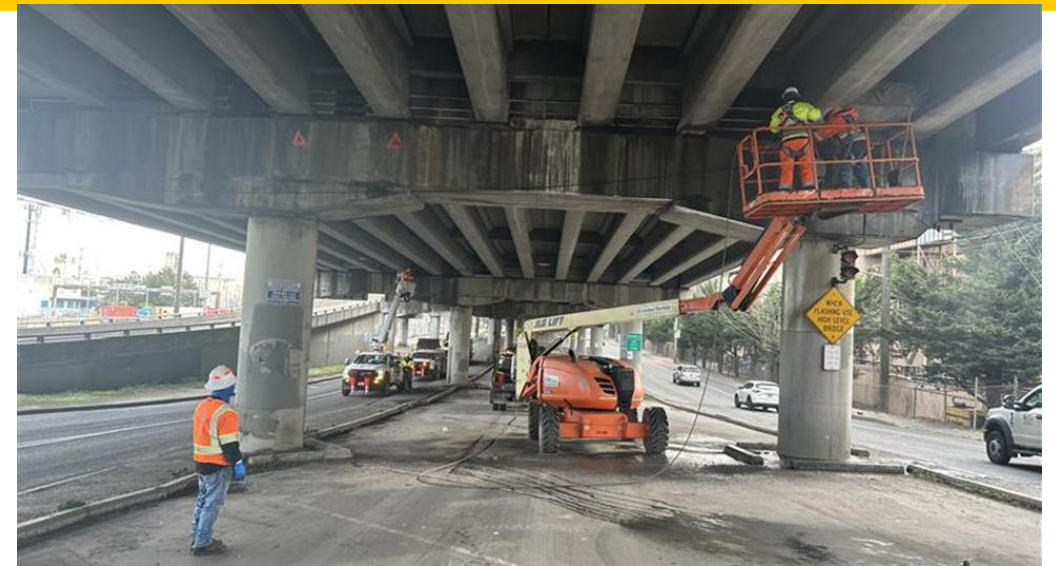
25 Areaway inspections



Progress on design for Ballard, Fremont, and University Bridge moveable canal bridge electrical/ mechanical upgrades



Progress on bridge replacement planning/alternative analysis work for 6 bridges: 1st Ave S Bridge over Argo Railyard, 4th Ave S Bridge over Argo Railyard, Elliott Bay Seawall, NE 45th St Viaduct, Magnolia Bridge, and W Dravus St over Railyard



Bridge cleaning on Fauntleroy Expressway.



Performing electrical preventative maintenance on the Ballard Bridge.



Bridge cleaning on a bridge on S Lucile St.



TRANSIT CORRIDORS AND CONNECTIONS

Connect people safely to transit hubs, including Link light rail stations and bus stops, and reduce delays on bus routes.



52 Transit spot improvements



8 New Transit Security Officers funded at King County Metro for the year



Progress on planning for transit or Link light rail access projects on N 130th St, Beacon Ave S, 4th Ave S, Rainier Ave S, and in South Lake Union



Community engagement for Graham St Station Area access planning



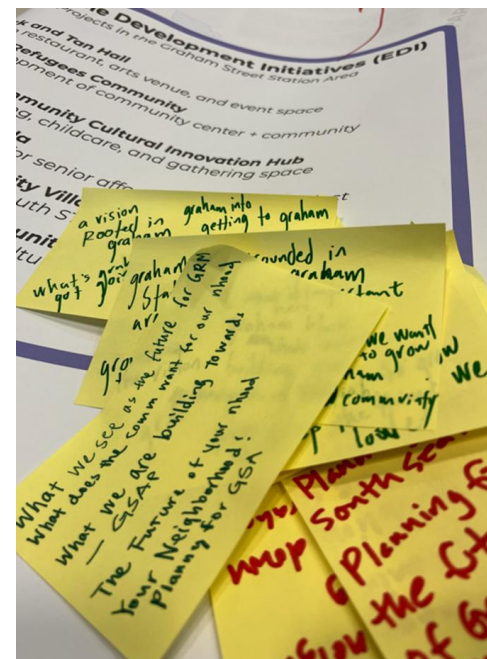
Bus zone improvements on 16th Ave SW and SW Thistle St, improving access for people riding the King County Metro Route 125 bus.



New posts to restrict northbound right turns from Westlake to Denny Way and prevent cars from using the bus-only lane.



Improvements along Aurora Avenue N in partnership with King County Metro, including expanded 24/7 bus lanes from downtown Seattle to N 145th St, the city's northern limits.



Photos of community outreach related to the Graham St Link Light Rail Station Area access planning. Photo credit: OPCD, Jessica Ramirez of OPCD, and Ian Dapiaonen of OPCD.



PEDESTRIAN SAFETY

Build and repair sidewalks, crossings, and curb ramps so people walking and rolling can safely get to where they need to go.



29 Blocks of new sidewalks and walkways



20,934 Sidewalk spot repairs



173 Customer-service requested curb ramps



2 Repaired or expanded stairways



41 Crossing improvements



10 Community walks hosted to identify new sidewalk needs



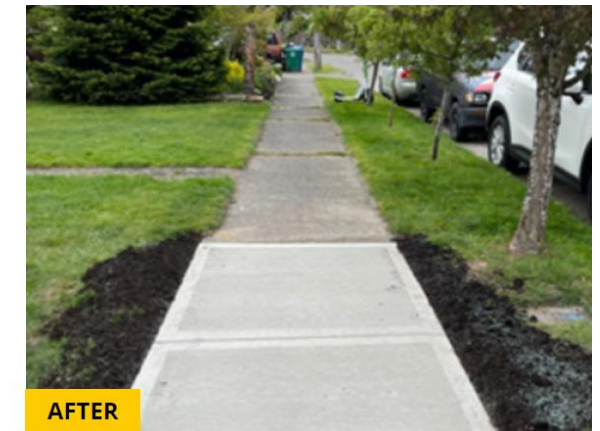
New mid-block crosswalk on NW 46th St, which was the result of a customer service request for this high-volume area.



New walkway on Corliss Ave N between N 117th and N 120th streets near James Baldwin Elementary School.



BEFORE



AFTER

Before and after sidewalk repair on Rainier Ave S & 52nd Ave S.

SIGNALS AND OPERATIONS

Install, maintain, and upgrade traffic signals for safe, reliable movement; improve pedestrian and bike accessibility signals; and support traffic operations during large events, incidents, and for trips in and out of the port.



5 corridor sections with signal timing adjustments



Intelligent Transportation System communication upgrades in Downtown Seattle and along I-5 Corridor in support of Revive I-5 and FIFA World Cup



Advanced on the 80th & 85th ITS Corridors FHWA Grant and MLK SMART Signals Grant projects



1 New traffic signals at NW 51st St & 15th Ave NW



3 signals with major maintenance performed

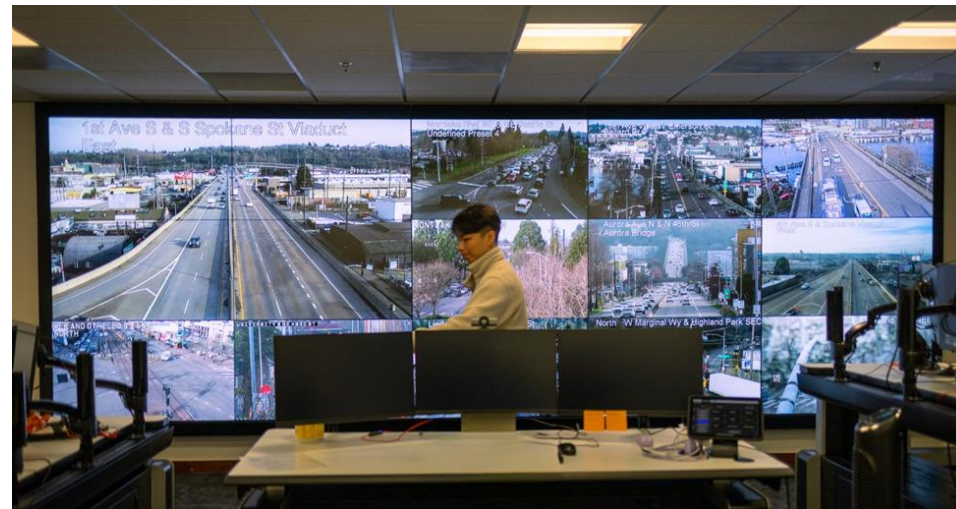
3,002 signs replaced



7,254 responses to questions from Seattle community members through our Customer Service team



New traffic signal at NW 51st St and 15th Ave NW, creating a new connection across 15th Ave NW for people walking, biking, and rolling to & from Ballard's Brewery District and its historic downtown.



24-7 operations of the Transportation Operations Center.



BICYCLE SAFETY

Expand Seattle's protected bike lane network; connect schools to bike lanes, paths, and neighborhood greenways; and maintain and upgrade existing bike lanes.



2 Neighborhood Greenways projects



365 Post repairs on protected bike lanes



Bike lane sweeping throughout Seattle



8 Existing protected bike lanes upgraded, totaling over 4 miles



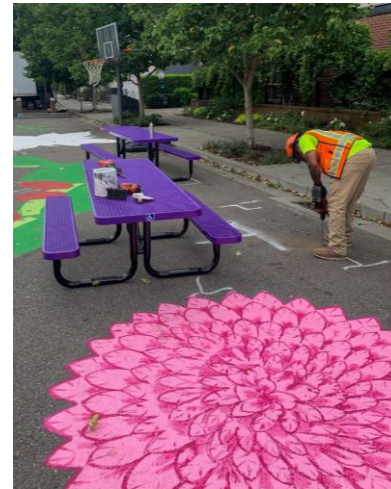
7 Bicycle spot improvements



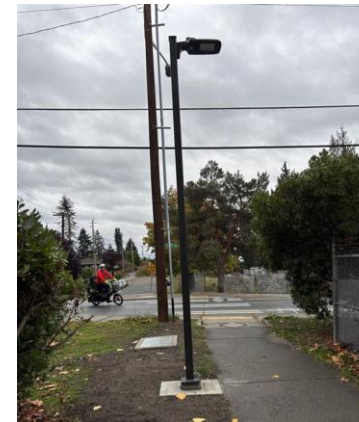
116 New bicycle parking spaces



New protected bike lanes on N 130th St



In Little Brook Park Plaza, we installed benches & picnic tables on this unique street plaza so people can socialize, linger, and enjoy public life on their street.



New lighting along the trail connection of the Ashworth Ave N Neighborhood Greenway supporting safe routes to school for kids at Ingraham High School and James Baldwin Elementary School.



Georgetown Healthy Street and Neighborhood Greenway, which includes elements for safety and traffic calming.



The U-District Neighborhood Greenway, which has been extended at the 12th Ave NE and NE Ravenna Blvd "triangle" with new wayfinding signs, updated sidewalks and curb ramps, speed humps, and new stop signs to make travel safer and more predictable.



PEOPLE STREETS AND PUBLIC SPACES

Activate public spaces and improve lighting in partnership with business districts and community organizations so people can enjoy unique and vibrant neighborhoods and business districts.



New lighting on 3rd Ave as part of Downtown Activation work and activating downtown’s public spaces



Refreshed striping along Ballard Ave people street



Pre-construction for Fortson Square Redesign



Planning and design of near-term investments for Occidental Promenade



Occidental Ave S, the site of an upcoming project.



1st and Pike Plaza.



Lights have brightened 3rd Ave and enhanced a crucial downtown corridor. The lighting complements new public art, including 36 additional murals throughout the downtown area.



Construction underway on Fortson Square.



CLIMATE & RESILIENCY

Address climate change directly, reducing air pollution and making sustainable transportation options more available.



~31 Existing curbside EV charging sites evaluated to understand usage



Launched interdepartmental workgroup with Seattle City Light, Seattle Parks and Recreation, and Seattle Public Libraries to identify sites for new EV charging



355 Trees planted as part of this program, for a total of about 1,100 across Seattle through other SDOT projects



2,957 Areas of landscaping maintained



Planning for Low-Pollution Neighborhoods work



Existing curbside electric vehicle chargers.



Planting trees on S Weller St and Rainier Ave S.



FREIGHT AND GOODS MOVEMENT

Make freight improvements to support trucks delivering goods and providing services.



6 freight spot improvements including improvements at the following at-grade rail crossings: Corson Ave S, Diagonal Ave S/Colorado Ave S/S Oregon St, S Hanford St, S Atlantic St, S Spokane St, and SW Spokane St



Progressed design to improve 5 grade crossings along E Marginal Way S



Progressed on planning Holgate Rail Crossing Elimination Study



Progressed with the Urban Freight Lab and continued data collection on Freight and Bus (FAB) - Only Lane on Route 40



S Holgate St, the site of a study to find ways to make this crossing safer and more efficient for everyone—drivers, pedestrians, cyclists, and businesses.



Repaired crossing surface at S Hanford St



Sinkhole repair at Diagonal Ave S / Colorado Ave S / S Oregon St



GOOD GOVERNANCE AND EQUITABLE IMPLEMENTATION INITIATIVE

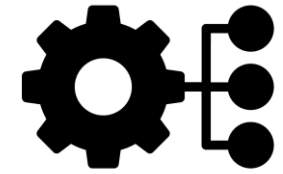
Maintain accountability and transparency for Seattle taxpayers and the public.



Recruited for and established
new Levy Oversight
Committee



Began
efforts to develop a
Transportation Funding
Task Force, including
selecting a consultant



Began
planning for Property Tax
Exemption Outreach

Thank you, Levy Oversight Committee!

What we'll share in the future

- Map of completed projects
- Over the next 12 months:
 - Summary of each Levy program
 - Completed and upcoming work, program goals, spending, and potential risks
 - Key questions about specific program commitments to ensure alignment on demonstrating accountability

5 minute break & reflection

Discussion Questions

- **Transparency and Reporting**

- Does the report provide detail and clarity you need to ensure transparency in how levy funds are spent?
- Is there additional material that could improve your and public understanding?

- **Community Outcomes**

- How does the report reflect the outcomes and community benefits achieved through the levy? What resonated most with you? What might you adjust?

- **Levy Delivery**

- What risks or challenges identified in the 2025 report do you want to learn more about?

Next Meeting (May)

Vision Zero, School, and Neighborhood Safety
Program overview

**From the entire SDOT Team
Thank you**